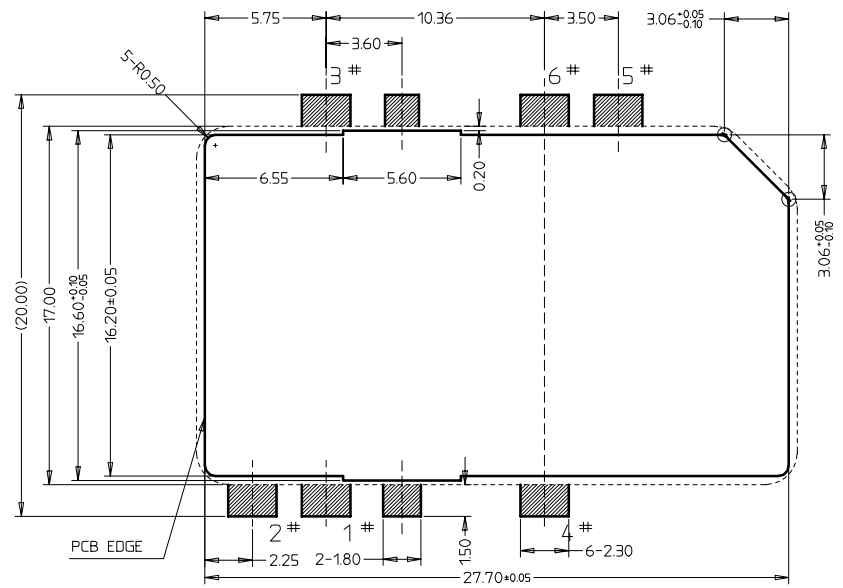
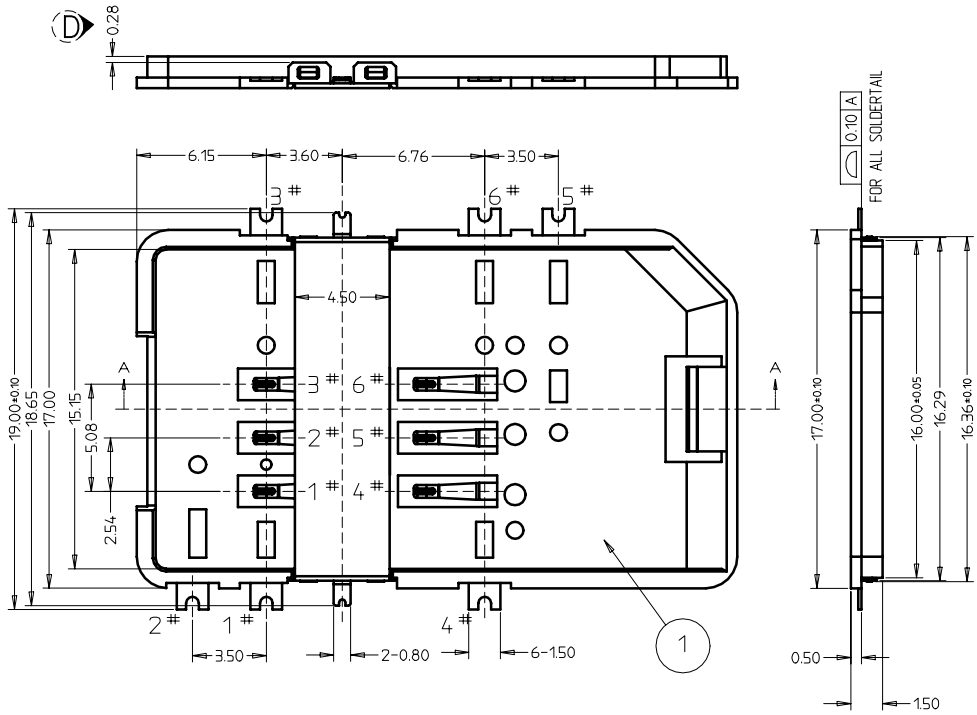
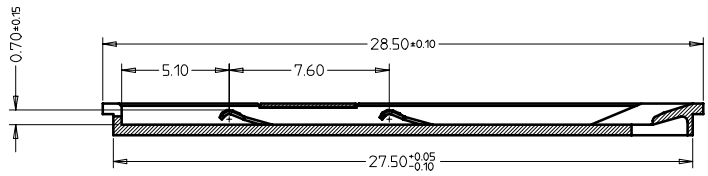


REV.	ECN NO OR DESCRIPTION	REVISED	DATE
A	PROPOSE ONLY	SIMON	08-11-12

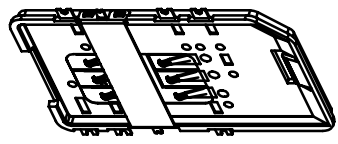
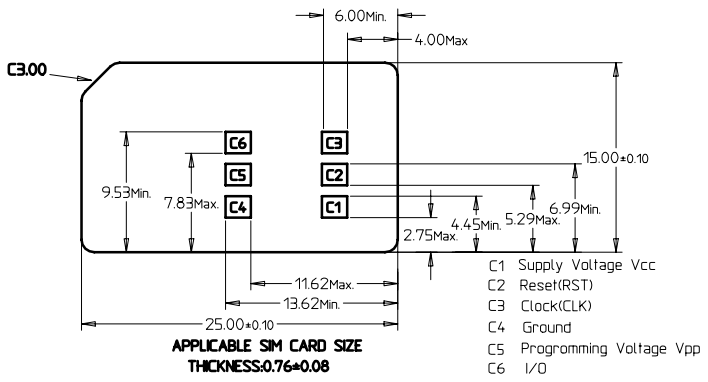


RECOMMENDED PCB MOUNTING PATTERN
General Tolerance: ±0.05

- Notes :
- Contacts chip cards according to ISO7816 and Plug In SIM-Card.
 - Material :
Housing : HIGH TEMPERATURE THERMOPLASTIC, BLACK, UL94V-0.
Terminal : Alloy Copper;
Shell: Stainless Steel,SUS304; plating 0.127um(5μ") gold min.
Terminal Plating: Card side
Gold flash other area.
Under layer 1.27~2.54 um(50μ"-100μ") Ni all over.
Shell Plating: Gold Flash plating on soldertail area.
 - CONTACT NORMAL FORCE IS 40g MIN.
 - PACKING:TAPE & REEL.



SECTION A-A



03	SHELL	1	Stainless Steel,SUS304	plating 0.127um(5μ") gold min.
02	TERMINAL	6	COPPER AOLLY	Gold flash other area.Under layer 1.27~2.54 um(50μ"-100μ") Ni all over.
01	HOUSING	1	HIGH TEMPERATURE THERMOPLASTIC	COLOR:BLACK
NO.	DESCRIPTION	QT'Y	MATERIAL	NOTE

UNLESS OTHERWISE SPECIFIED TOLERANCES		深圳市精睿兴业科技有限公司 SHENZHEN KRCONN TECHNOLOGY CO., LTD			
DECIMALS:	ANGLES:	TITLE	6PIN SIM CARD Break & Surface,1.5mmH		
X :±0.5	X :±2°	DWN	JOHNLE	PART NO. 9502-00605-47R	
X.X :±0.20	X.X :±1°	CHKD	KEVIN.D	SCALE:1:1	UNIT: mm
X.XX :±0.10		APVD	SIMON.M	SIZE: A4	SHEET:10F 1
		REV: B			
CUSTOMER COPY					